

## Reinforced Earth with the Krismer System®



### Access Ramps - Gasometer B, Vienna

Client: HABAU / Perg OÖ  
DANNER Vorchdorf OÖ

Execution period: 2001  
Slope angle: 65° - 85° (aprox.)

Assignment: - The construction of two access ramps with adjacent steep slopes  
- Installation of a stable vegetation layer  
- Permanent revegetation of the slope surfaces

Building method: Construction of the ramps with fill material and reinforced earth  
Steep slope protection and vegetation with the Krismer System

## Initial Situation

## Reinforced Earth with the Krismer System®

Building a viable subgrade and calibration of the ramps that are to be built.  
Setting up the temporary framework for the construction of the reinforced earth wall.  
Laying out geotextile and reinforcement mesh.



## Reinforced Earth with the Krismer System®

### Ramp Construction

Filling of the reinforcement layers with ballast material, fine spreading done manually .



## Reinforced Earth with the Krismer System®

### Ramp Construction

Compression of the ballast material with a steam roller and manually operated tampers



## Reinforced Earth with the Krismer System®

### Ramp Construction - Detail

Reinforced earth molds, layers built up stepwise



## Reinforced Earth with the Krismer System®

### Finished Ramps in Detail

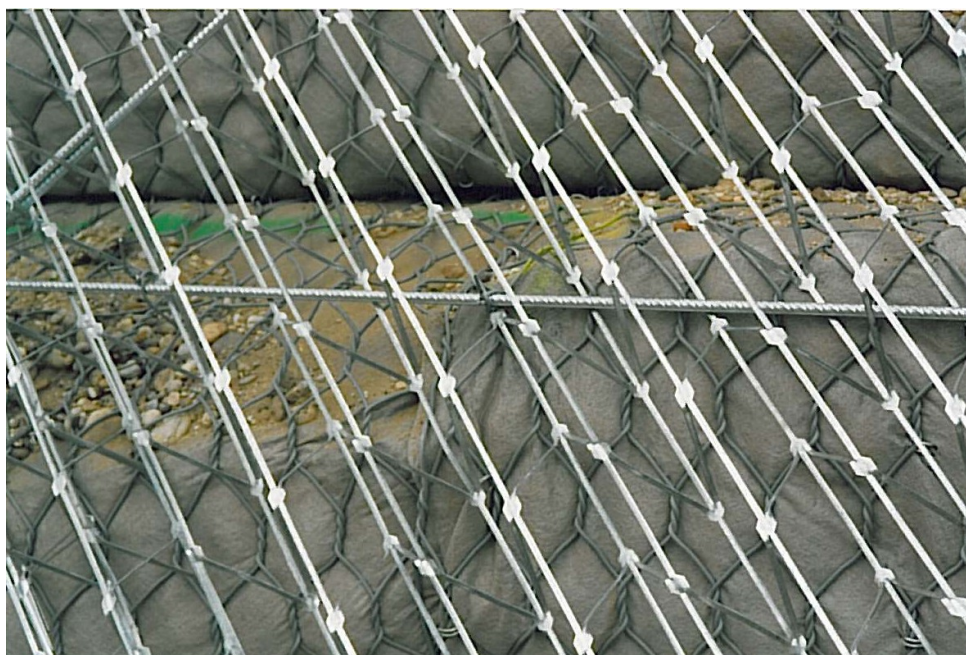
Completed reinforced earth wall after construction was finished and the molds had been removed, before being protected with the Krismer System.



## Reinforced Earth with the Krismer System®

### Installation of the Krismer System to cover the reinforced earth walls

Placing of the **three-dimensional steel screen panels**, reinforced with **distribution rods**, fastened to the reinforcement mesh with wire binding loops and anchored with **T-steel soil nails**



## Reinforced Earth with the Krismer System®

### Results / Accomplishments

safe, sturdy ramp construction with reinforced earth  
permanent surface protection and revegetation with the Krismer System  
while integrating the ramp and wall into the landscape

